

IMPORTANT SAFETY INSTRUCTIONS

When using electrical appliances, especially when children are present, basic safety instructions should always be followed, including the following:

Polythene bags over product or package may be dangerous. To avoid danger of suffocation, keep this wrapper away from babies and children. This bag is not a toy.

DANGER: When the unit is used in a bathroom, unplug it after use since the proximity of water presents a hazard even when the unit is switched off.



WARNING: Do not use this appliance in or near bathtubs, showers, basins or other vessels containing water.

- Do not immerse in water or other liquids.
- Do not reach for an appliance that has fallen into water. Unplug immediately.
- Take care to avoid contact between the hot surfaces of the unit and the skin, paying particular attention to the face, neck and hands.
- This appliance is not intended for use by persons (including children) with reduced physical, sensory or mental capabilities, or lack of experience or instruction concerning use of the appliance by a person responsible for their safety.
- Children should be supervised to ensure they do not play with the appliance.

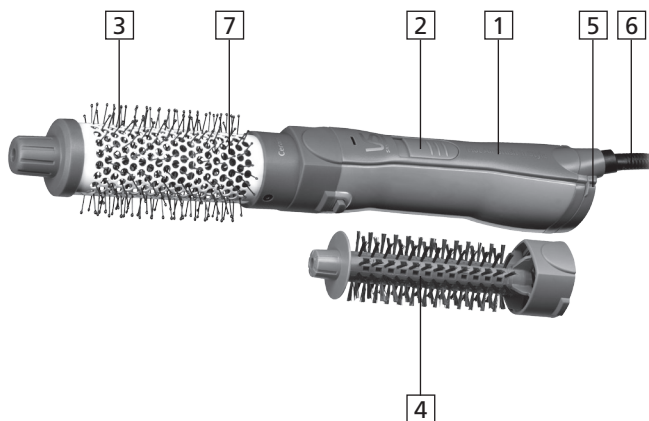
IMPORTANT: Always unplug the appliance when not in use or before cleaning. Do not leave unattended when plugged in or switched on. Do not place on any heat sensitive surface and always allow to cool before storing away.

- Do not use any attachments other than those supplied by Conair Australia Pty Ltd.
- Use this appliance only for its intended use and as described in this instruction booklet.
- This appliance is not intended for commercial use.
- Never drop or insert any object into an opening.
- Never block the air openings of the appliance or place on a soft surface such as a bed or couch, where the air openings may be blocked. Keep the air openings free of lint and other debris.
- Do not use outdoors or operate where aerosol (spray) products are being used or where oxygen is being administered.
- Keep the cord away from heated surfaces.
- Do not use an extension cord with this appliance.
- If the supply cord is damaged it must be replaced by the manufacturer, its service agent or similarly qualified persons in order to avoid a hazard.
- After use do not wrap the cord around the appliance as in time this may cause the cord to fracture. Coil cord loosely by the side of the appliance in storage.
- Always ensure that the voltage to be used corresponds to the voltage marked on the unit.
- For additional protection, the installation of a residual current device (RCD) with a rated operating current not exceeding 30mA is advisable in the electrical current circuit supplying the bathroom. Ask your installer for advice.

Hot Air Brush 'n Style

The VS Sassoon Hot Air Brush 'n Style is a powerful hot air styler that offers 800 watts for gentle styling and easy control. It features 3 heat/speed settings for styling all hair types with ceramic technology to leave hair silky and shiny with reduced frizz.

With a thermal brush attachment for easy blow drying, added smoothness and creating volume and a bristle brush attachment for the finishing touches, the Hot Air Brush 'N Style is the ideal styling tool for those wanting to achieve salon professional results at home.



Features:

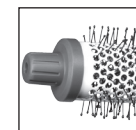
1. 800 watts
2. 3 heat/speed settings including cool setting
3. Thermal brush attachment
4. Bristle brush attachment
5. Removable rear filter
6. Swivel power cord
7. Ceramic technology

How to use your Hot Air Brush 'n Style

Wash and condition your hair as usual.

1. Use your hot-air brush on pre-dried, slightly damp hair that is completely tangle free.
2. Ensure the switch is set to the off setting before plugging into a 240v suitable power outlet.
3. There are 3 heat/speed settings:
 - a. The low heat is also best for fine or damaged hair.
 - b. The highest setting is ideal for thick or hard to style hair.
 - c. Finish using the cool setting to set the style.

The Attachments:



Thermal Brush –

Start with the thermal brush for easy blow drying.

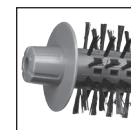
It is perfect for:

- Adding extra volume and body for greater texture and movement
- Smoothing
- Straightening
- Medium to large curls with volume.

The ceramic coated barrel on the attachment retains and spreads heat evenly on the hair section, making it easy to style.

To style using the thermal brush attachment:

1. Divide hair into equal sections.
2. Starting at the front, dry the bottom sections by curling hair around the thermal brush.
3. Slowly let the brush glide down the hair section to smooth the hair cuticle.
4. Continue around the nape of the neck and up to the top of the head until all sections are smooth and curled under.



Bristle Brush –

Use the bristle brush attachment for the finishing touches. This brush helps accentuate the shaping of certain sections like the fringe, the tips or the roots.

The use can also vary according to the length of your hair:

- On short hair, it can be used horizontally, like the thermal brush, for gentle and natural blow drying with the ends flicked out or tucked under. bristles have a stronger hold on the hair making it ideal for shaping the ends and fringes.

To style using the bristle brush:

1. Place the brush under the hair, close to the scalp.
2. Let it slide down to the hair ends. This will give gradual volume and perfect shape to your hairstyle.

What is Ceramic technology?

Ceramic Technology™ delivers fast, efficient and superior styling results. When introduced to heat, ceramic produces far-infrared (FIR) heat waves. These wavelengths enable hair to more easily absorb heat, drying the hair follicle from the inside out, minimising damage and stress to the hair.

Cleaning and Maintenance

To help maintain optimum performance and prevent overheating of your appliance, the rear filter should be cleaned on a regular basis.

- Ensure that the appliance is switched off, unplugged from the power outlet and has cooled down.
- Holding the handle of the appliance firmly, pull the rear filter down to remove.
- Using a soft brush, clean any hair and other debris that may build up in the filter.
- Replace the rear filter by pushing back into position.

Limited Two-Year Warranty

This product is subject to the express warranty given on the warranty card included with the product, as may be amended by reference to and in accordance with the terms of the warranty cards displayed on VS Sassoon website www.vssassoon.com.au

To make a warranty claim you must retain your proof of purchase. Further details can be found at www.vssassoon.com.au and click on 'customer service'.

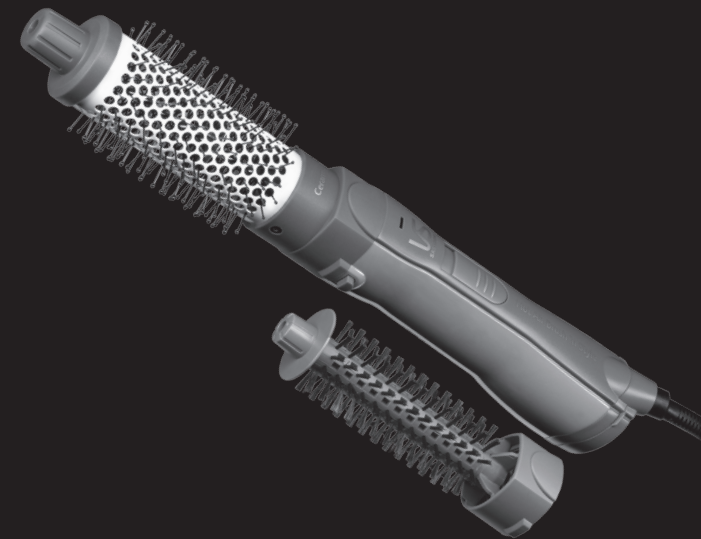
Get more from your styling tools, visit
www.vssassoon.com.au
for news, styling tips and much more.

Vidal Sassoon and related logos are trademarks of
The Procter & Gamble Company used under licence by Conair
©2013 Conair Australia Pty Ltd
Suites 20 and 21,
7 Narabang Way, Belrose NSW 2085
Customer Service Hotline (Australia): 1800 650 263
Customer Service e-mail: aus_info@conair.com
Conair New Zealand Ltd.,
PO Box 251159, Pakuranga, Auckland, 1706, New Zealand
Customer Service Hotline (New Zealand): 0800 266 247

VS
SASSOON



VS
SASSOON



instruction booklet
Hot Air Brush 'n Style

VS8080A

LONDON • NEW YORK • SYDNEY
JOIN THE EVOLUTION.™